

KE DISC

FREN DISKI  
BREMSSCHEIBE  
DISQUE DE FREIN  
DISCO DE FRENO  
ТОРМОЗНОЙ ДИСК

www.aydtr.com

OE Excellence

**BRAKE PADS**

FREN BALATASI  
BREMSBELÄGE  
PASTILLAS DE FRENO  
PLAQUETTES DE FREIN  
ТОРМОЗНЫЕ КОЛОДКИ



**BRAKING**

**THE DIFFERENCE**

**SAFETY**

**PERFORMANCE**

**OEM Standards**

**AYD QUALITY**



**FEBRUARY 2025**

www.aydtr.com

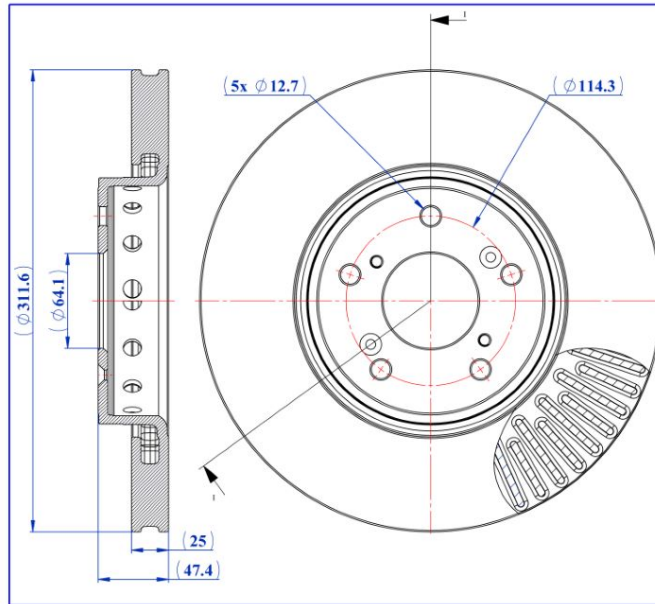
### INDEX BRAKE DISC

ACURA .....	3
ALFA ROMEO .....	4
AUDI .....	5
BMW .....	6-7
CADILLAC .....	8-10
CHEVROLET .....	11-12
CITROEN .....	13
DODGE .....	14
FIAT .....	15
FORD .....	16-19
GMC .....	20
HONDA .....	21
HYUNDAI .....	22
ISUZU .....	23
JEEP .....	24
KIA .....	25
LEXUS .....	26
MERCEDES .....	27
MINI .....	28
MITSUBISHI .....	28-30
NISSAN .....	31-33
OPEL .....	34-35
PEUGEOT .....	36-37
RENAULT .....	38
SCION .....	39-40
SKODA .....	41
SUBARU .....	42
TOYOTA .....	43-45
VAUXHALL .....	46
VOLVO .....	47
VOLKSWAGEN .....	48

### BRAKE DISC

- Front Axle
- Vented

- Safety
- Performance
- OEM Standarts
- AYD Quality



AYD NO  
**10-51516**

MATERIAL  
**TYPE-1**

WEIGHT  
**7,72 KG**

BALANCING  
**100 %**



OE:  
45251TX4A01 / 45251TX4A00

**10-51516**

#### Technical Specifications:

Diameter (mm)	Height (mm)	Brake Disc Thickness (mm)	Min. Thickness (mm)	Centering Diameter (mm)	Bolt Hole Circle (mm)	Num. of Holes
311.6	47.4	25	23	64.1	114.3	5+4

### ACURA

MODEL	START Y.	END Y.
RDX	2012/01	2018/05



### BRAKE DISC

- Front Axle
- Vented

- Safety
- Performance
- OEM Standarts
- AYD Quality



OE:  
50532932 / 50556528 / 50568875

**10-51510**

AYD NO <b>10-51510</b>	
MATERIAL <b>TYPE-1</b>	
WEIGHT <b>9,59 KG</b>	
BALANCING <b>100 %</b>	

#### Technical Specifications:

Diameter (mm)	Height (mm)	Brake Disc Thickness (mm)	Min. Thickness (mm)	Centering Diameter (mm)	Bolt Hole Circle (mm)	Num. of Holes
330	44.7	28	25.5	70.05	110	5+5

### ALFA ROMEO

MODEL	START Y.	END Y.
GIULIA (952_)	2015/10	
STELVIO (949_)	2016/12	

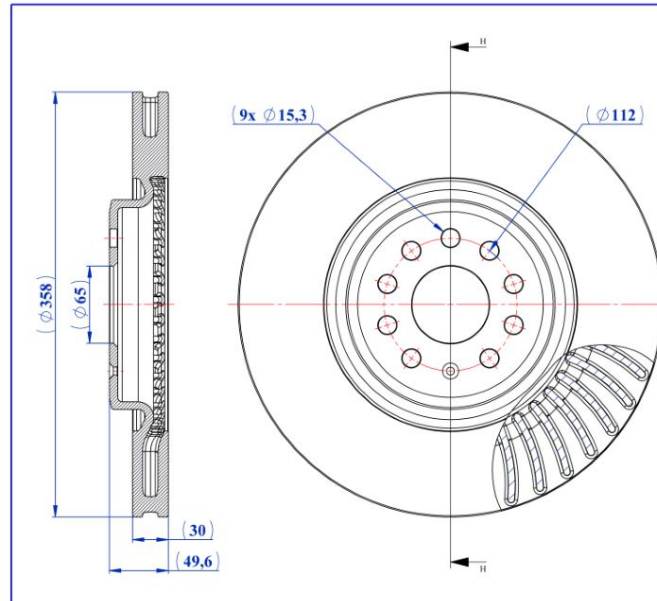




### BRAKE DISC

- Front Axle
- Vented

- Safety
- Performance
- OEM Standarts
- AYD Quality



AYD NO  
**10-50916**

MATERIAL  
**TYPE-1**

WEIGHT  
**11,86 KG**

BALANCING  
**100 %**



OE:  
1EA615301B

**10-50916**

#### Technical Specifications:

Diameter (mm)	Height (mm)	Brake Disc Thickness (mm)	Min. Thickness (mm)	Centering Diameter (mm)	Bolt Hole Circle (mm)	Num. of Holes
358	49.6	30	28.5	65	112	9+1

### AUDI

MODEL	START Y.	END Y.
Q4 Sportback (F4N)	2021/06	
Q4 SUV (F4B)	2020/07	



### BRAKE DISC

- Front Axle
- Vented

- Safety
- Performance
- OEM Standarts
- AYD Quality



OE:  
34111160915 / 34111160847 /  
34111154750

**10-51503**

**AYD**<sup>®</sup>  
AUTOMOTIVE INDUSTRY

---

AYD NO  
**10-51503**

---

MATERIAL  
**TYPE-1**

---

WEIGHT  
**4,89 KG**

---

BALANCING  
**100 %**

#### Technical Specifications:

Diameter (mm)	Height (mm)	Brake Disc Thickness (mm)	Min. Thickness (mm)	Centering Diameter (mm)	Bolt Hole Circle (mm)	Num. of Holes
260	35.1	22	20.4	66	100	4+1

### BMW

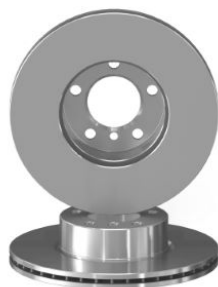
MODEL	START Y.	END Y.
3 (E30)	1982/09	1992/03
3 Convertible (E30)	1982/09	1993/11
3 Touring (E30)	1987/07	1994/10
Z1 Roadster	1988/06	1991/06



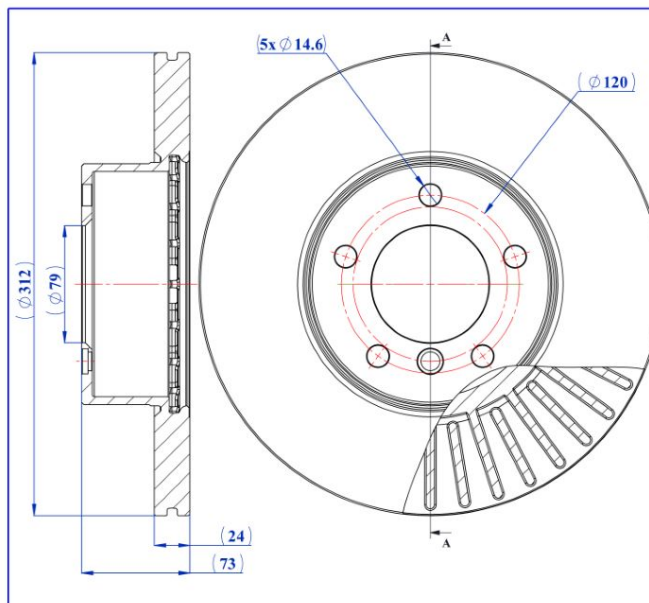
### BRAKE DISC

- Front Axle
- Vented

- Safety
- Performance
- OEM Standards
- AYD Quality



OE:  
34118848418 / 34116774875 /  
34116855006

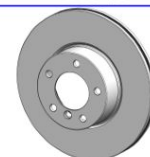


AYD NO  
**10-51517**

MATERIAL  
**TYPE-1**

WEIGHT  
**8.85 KG**

BALANCING  
**100 %**



**10-51517**

#### Technical Specifications:

Diameter (mm)	Height (mm)	Brake Disc Thickness (mm)	Min. Thickness (mm)	Centering Diameter (mm)	Bolt Hole Circle (mm)	Num. of Holes
312	73	24	22.4	79	120	5+1

### BMW

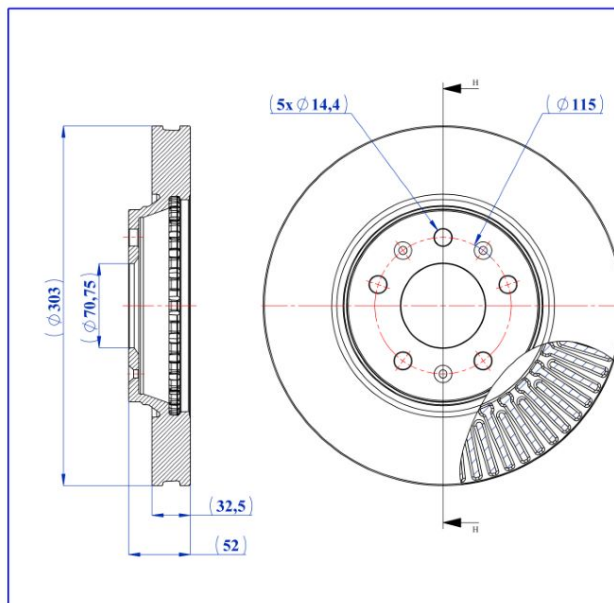
MODEL	START Y.	END Y.
3 (E90)	2004/02	2012/02
3 (F30. F80)	2011/11	2018/10
3 Convertible (E93)	2006/05	2013/12
3 Coupe (E92)	2005/01	2013/12
3 Touring (E91)	2004/12	2012/12
X1 (E84)	2009/03	2015/06



### BRAKE DISC

- Front Axle
- Vented

- Safety
- Performance
- OEM Standarts
- AYD Quality



AYD NO  
**10-51496**

MATERIAL  
**TYPE-1**

WEIGHT  
**9.88 KG**

BALANCING  
**100 %**



OE:  
88964102 / 18060686

**10-51496**

#### Technical Specifications:

Diameter (mm)	Height (mm)	Brake Disc Thickness (mm)	Min. Thickness (mm)	Centering Diameter (mm)	Bolt Hole Circle (mm)	Num. of Holes
303	52	32.5	30.7	70.75	115	5+3

### CADILLAC

MODEL	START Y.	END Y.
STS	2004/09	2007/12

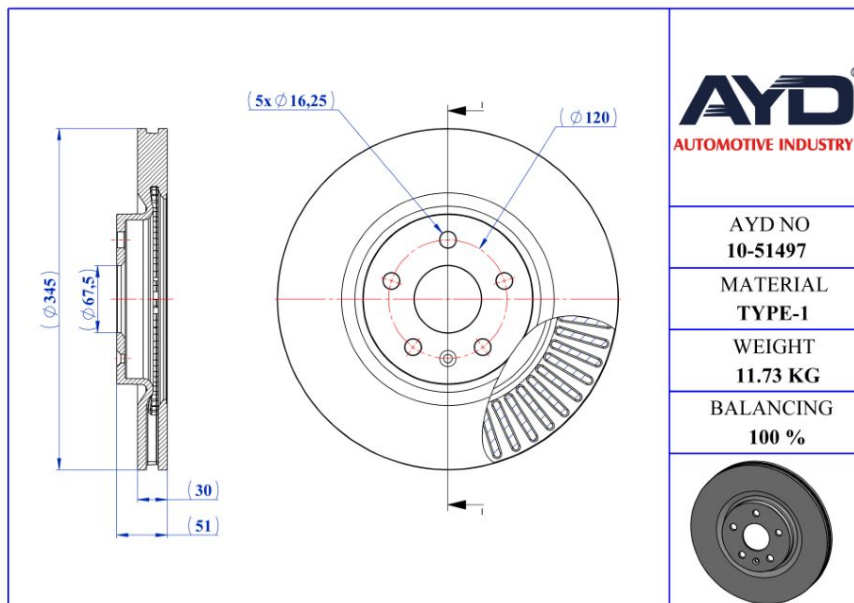




### BRAKE DISC

- Front Axle
- Vented

- Safety
- Performance
- OEM Standarts
- AYD Quality

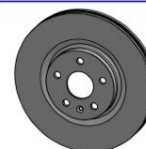


AYD NO  
**10-51497**

MATERIAL  
**TYPE-1**

WEIGHT  
**11.73 KG**

BALANCING  
**100 %**



OE:  
23118526

**10-51497**

#### Technical Specifications:

Diameter (mm)	Height (mm)	Brake Disc Thickness (mm)	Min. Thickness (mm)	Centering Diameter (mm)	Bolt Hole Circle (mm)	Num. of Holes
345	51	30	27	67.5	120	5+1

### CADILLAC

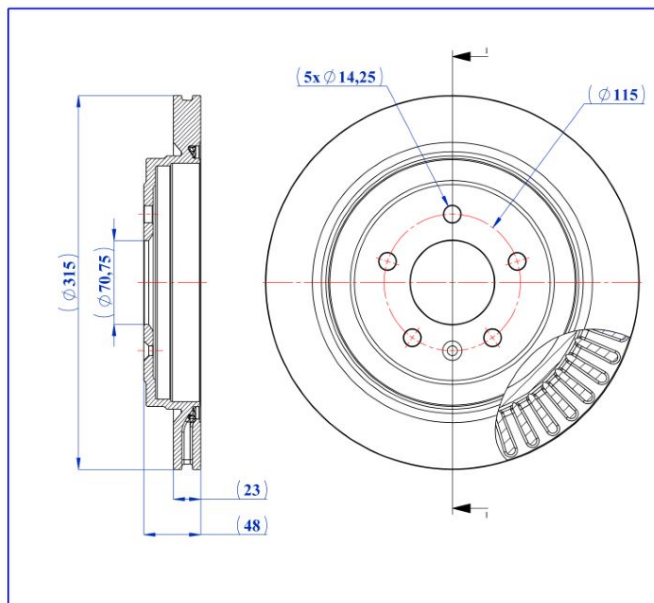
MODEL	START Y.	END Y.
XTS (1P5)	2011/09	



### BRAKE DISC

- Rear Axle
- Vented

- Safety
- Performance
- OEM Standarts
- AYD Quality



AYD NO  
**10-51500**

MATERIAL  
**TYPE-1**

WEIGHT  
**7.57 KG**

BALANCING  
**100 %**



OE:  
23118092 / 13581427 / 13590083

**10-51500**

#### Technical Specifications:

Diameter (mm)	Height (mm)	Brake Disc Thickness (mm)	Min. Thickness (mm)	Centering Diameter (mm)	Bolt Hole Circle (mm)	Num. of Holes
315	48	23	21	70.75	115	5+1

### CADILLAC

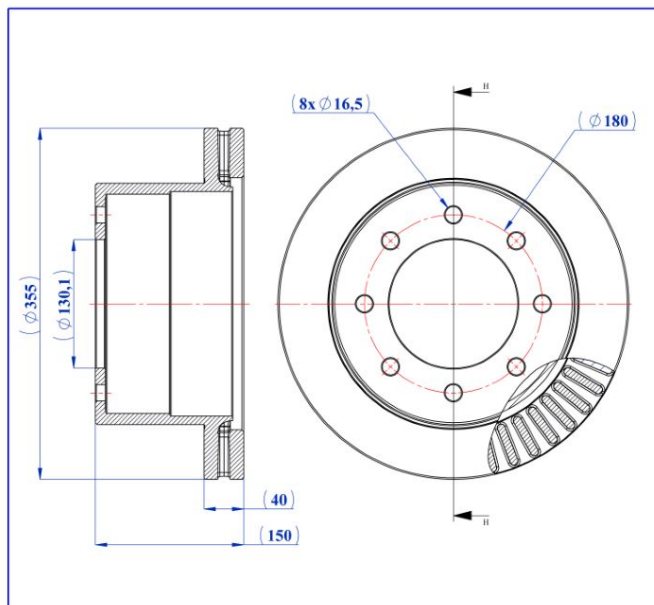
MODEL	START Y.	END Y.
ATS	2013/02	
ATS Coupe	2013/02	



### BRAKE DISC

- Rear Axle
- Vented

- Safety
- Performance
- OEM Standards
- AYD Quality

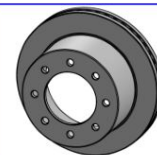


AYD NO  
**10-51493**

MATERIAL  
**TYPE-1**

WEIGHT  
**20.52 KG**

BALANCING  
**100 %**



OE:  
25815024 / 22761959

**10-51493**

#### Technical Specifications:

Diameter (mm)	Height (mm)	Brake Disc Thickness (mm)	Min. Thickness (mm)	Centering Diameter (mm)	Bolt Hole Circle (mm)	Num. of Holes
355	150	40	38	130.1	180	8

### CHEVROLET

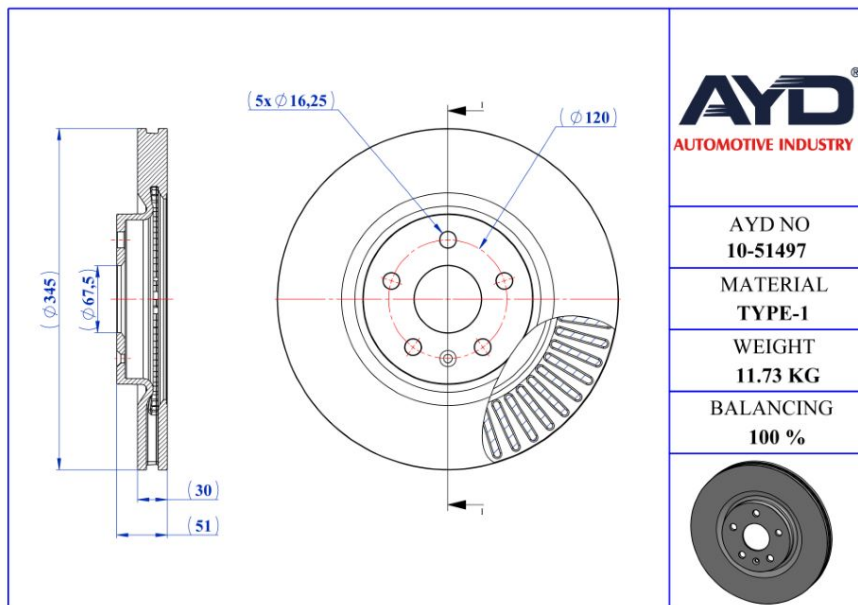
MODEL	START Y.	END Y.
SILVERADO 3500 HD Crew Cab Pickup	2013/09	
SILVERADO 3500 HD Extended Cab Pickup	2013/09	
SILVERADO 3500 HD Extended Cab Pickup	2007/09	2013/12
SILVERADO 3500 HD Standard Cab Pickup	2013/09	
SILVERADO 3500 HD Standard Cab Pickup	2007/09	2013/12



### BRAKE DISC

- Front Axle
- Vented

- Safety
- Performance
- OEM Standarts
- AYD Quality



<b>AYD</b> AUTOMOTIVE INDUSTRY
AYD NO <b>10-51497</b>
MATERIAL <b>TYPE-1</b>
WEIGHT <b>11.73 KG</b>
BALANCING <b>100 %</b>

OE:  
84714265 / 13586138 / 25946317

**10-51497**

#### Technical Specifications:

Diameter (mm)	Height (mm)	Brake Disc Thickness (mm)	Min. Thickness (mm)	Centering Diameter (mm)	Bolt Hole Circle (mm)	Num. of Holes
345	51	30	27	67.5	120	5+1

### CHEVROLET

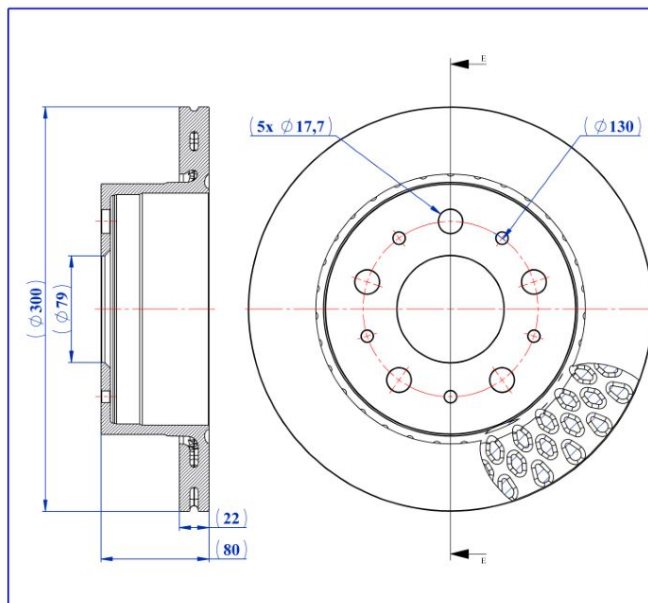
MODEL	START Y.	END Y.
CORVETTE (C8)	2019/07	
CORVETTE Convertible (C8)	2019/10	



### BRAKE DISC

- Rear Axle
- Vented

- Safety
- Performance
- OEM Standarts
- AYD Quality



AYD NO  
**10-51498**

MATERIAL  
**TYPE-1**

WEIGHT  
**8,52 KG**

BALANCING  
**100 %**



OE:  
1612435780 / 1612435880

**10-51498**

#### Technical Specifications:

Diameter (mm)	Height (mm)	Brake Disc Thickness (mm)	Min. Thickness (mm)	Centering Diameter (mm)	Bolt Hole Circle (mm)	Num. of Holes
300	80	22	19.9	79	130	5+5

### CITROËN

MODEL	START Y.	END Y.
JUMPER II Bus	2006/04	
JUMPER II Platform/Chassis	2006/04	
JUMPER II Van	2006/04	





### BRAKE DISC

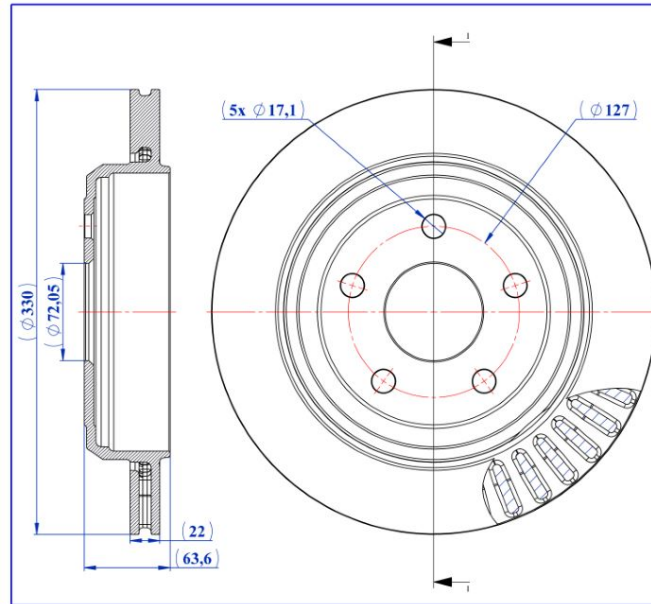
- Rear Axle
- Vented

- Safety
- Performance
- OEM Standarts
- AYD Quality



OE:  
68035022AD

**10-51518**



AYD NO  
**10-51518**

MATERIAL  
**TYPE-1**

WEIGHT  
**8,4 KG**

BALANCING  
**100 %**



#### Technical Specifications:

Diameter (mm)	Height (mm)	Brake Disc Thickness (mm)	Min. Thickness (mm)	Centering Diameter (mm)	Bolt Hole Circle (mm)	Num. of Holes
330	63.6	22	20.5	72.05	127	5

### DODGE

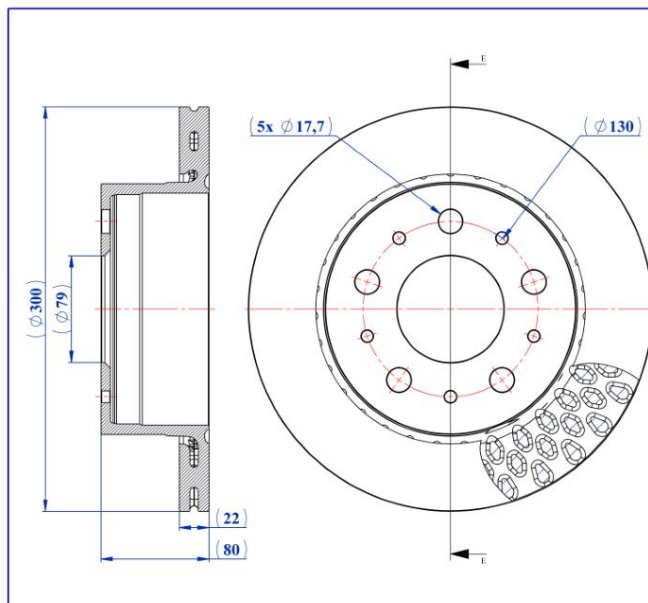
MODEL	START Y.	END Y.
DURANGO (WD)	2010/12	



### BRAKE DISC

- Rear Axle
- Vented

- Safety
- Performance
- OEM Standarts
- AYD Quality



AYD NO  
**10-51498**

MATERIAL  
**TYPE-1**

WEIGHT  
**8,52 KG**

BALANCING  
**100 %**



OE:  
51957511 / 51957512

**10-51498**

#### Technical Specifications:

Diameter (mm)	Height (mm)	Brake Disc Thickness (mm)	Min. Thickness (mm)	Centering Diameter (mm)	Bolt Hole Circle (mm)	Num. of Holes
300	80	22	19.9	79	130	5+5

### FIAT

MODEL	START Y.	END Y.
DUCATO Bus (250_)	2006/07	
DUCATO Platform/Chassis (250_)	2006/07	
DUCATO Van (250_)	2006/07	



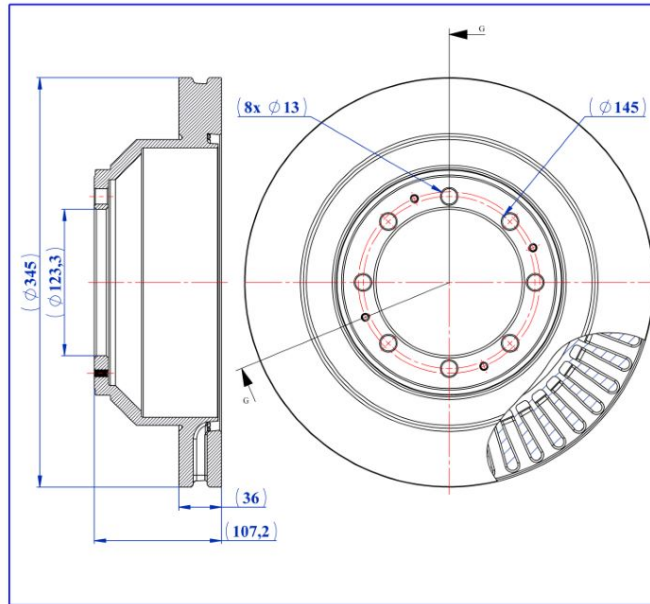
### BRAKE DISC

- Rear Axle
- Vented

- Safety
- Performance
- OEM Standarts
- AYD Quality



OE:  
8C2Z2C026A / 8C2Z2V026A /  
LC2Z2C026A



AYD NO  
**10-51501**

MATERIAL  
**TYPE-1**

WEIGHT  
**14,91 KG**

BALANCING  
**100 %**



**10-51501**

#### Technical Specifications:

Diameter (mm)	Height (mm)	Brake Disc Thickness (mm)	Min. Thickness (mm)	Centering Diameter (mm)	Bolt Hole Circle (mm)	Num. of Holes
345	107.2	36	34.4	123.3	145	8+4

### FORD

MODEL	START Y.	END Y.
E-350 Super Duty	2008	



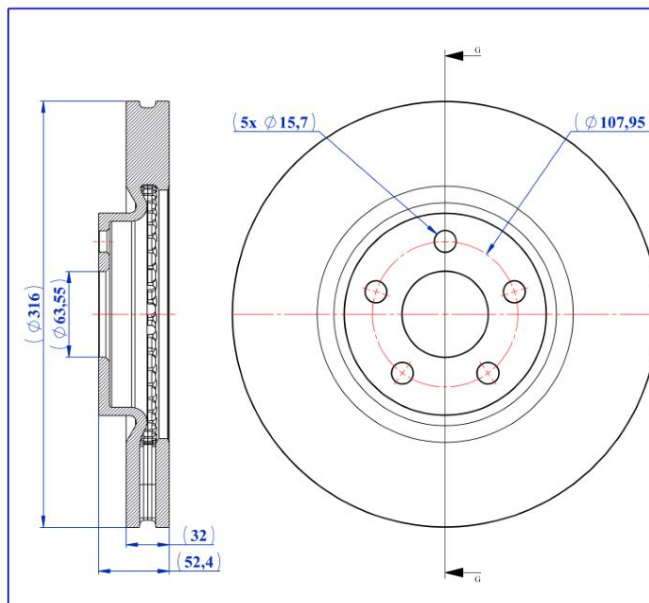
### BRAKE DISC

- Front Axle
- Vented

- Safety
- Performance
- OEM Standarts
- AYD Quality



OE:  
E1GZ1125E / E1GZ1125F / 2019816



AYD NO  
**10-51505**

MATERIAL  
**TYPE-1**

WEIGHT  
**11,13 KG**

BALANCING  
**100 %**



**10-51505**

#### Technical Specifications:

Diameter (mm)	Height (mm)	Brake Disc Thickness (mm)	Min. Thickness (mm)	Centering Diameter (mm)	Bolt Hole Circle (mm)	Num. of Holes
316	52.4	32	30.5	63.55	107.95	5

### FORD

MODEL	START Y.	END Y.
GALAXY III (CK)	2015/01	
GALAXY MK III VAN (CK)	2019/03	
S-MAX (CJ. WA6)	2015/01	



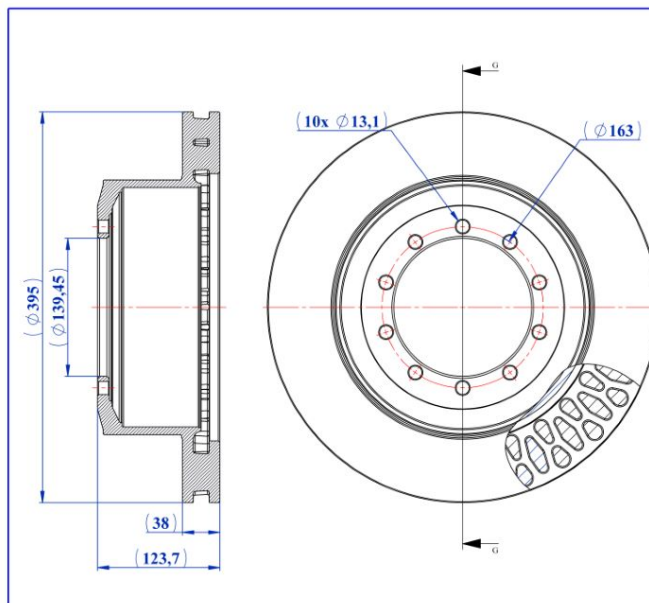
### BRAKE DISC

- Rear Axle
- Vented

- Safety
- Performance
- OEM Standarts
- AYD Quality



OE:  
3U2Z1V125C / F81Z1V125AA /  
F81Z1102AC

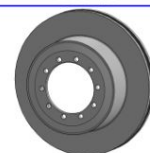


AYD NO  
**10-51513**

MATERIAL  
**TYPE-1**

WEIGHT  
**21,02 KG**

BALANCING  
**100 %**



**10-51513**

#### Technical Specifications:

Diameter (mm)	Height (mm)	Brake Disc Thickness (mm)	Min. Thickness (mm)	Centering Diameter (mm)	Bolt Hole Circle (mm)	Num. of Holes
395	123.7	38	36	139.45	163	10

### FORD

MODEL	START Y.	END Y.
F-450 Super Duty	2008	





### BRAKE DISC

- Front Axle
- Vented

- Safety
- Performance
- OEM Standarts
- AYD Quality



OE:  
F2GZ1125D / K2GZ1125B

**10-51515**

Technical drawing showing a cross-section and a top view of the brake disc. Dimensions include: (Ø 345) for the outer diameter, (Ø 63.6) for the centering diameter, (32) for the thickness, (52.4) for the hub height, and (5x Ø 15.7) for the bolt holes. The top view also shows a bolt hole circle diameter of (Ø 107.95). The AYD logo and 'AUTOMOTIVE INDUSTRY' are present.

AYD NO <b>10-51515</b>
MATERIAL <b>TYPE-1</b>
WEIGHT <b>12,24 KG</b>
BALANCING <b>100 %</b>

#### Technical Specifications:

Diameter (mm)	Height (mm)	Brake Disc Thickness (mm)	Min. Thickness (mm)	Centering Diameter (mm)	Bolt Hole Circle (mm)	Num. of Holes
345	52.4	32	30.5	63.6	107.95	5

### FORD

MODEL	START Y.	END Y.
Fusion	2017	2020
Edge	2015	2022



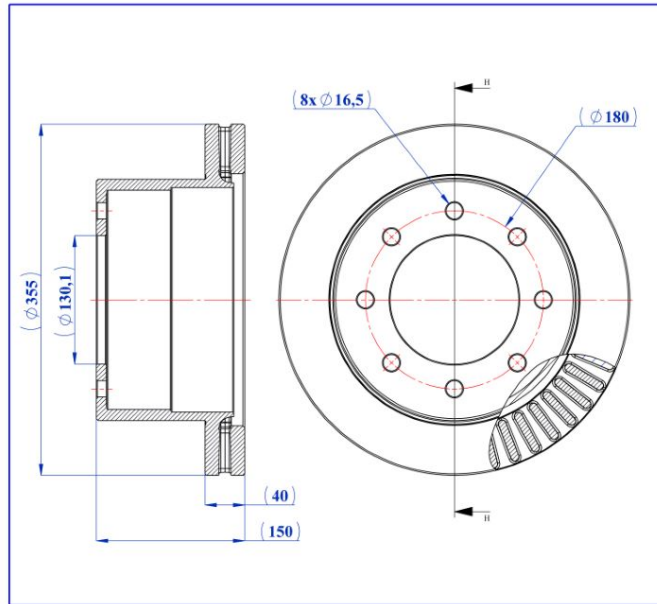
### BRAKE DISC

- Rear Axle
- Vented

- Safety
- Performance
- OEM Standards
- AYD Quality

OE:  
25815024

**10-51493**



AYD NO  
**10-51493**

MATERIAL  
**TYPE-1**

WEIGHT  
**20.52 KG**

BALANCING  
**100 %**



#### Technical Specifications:

Diameter (mm)	Height (mm)	Brake Disc Thickness (mm)	Min. Thickness (mm)	Centering Diameter (mm)	Bolt Hole Circle (mm)	Num. of Holes
355	150	40	38	130.1	180	8

### GMC

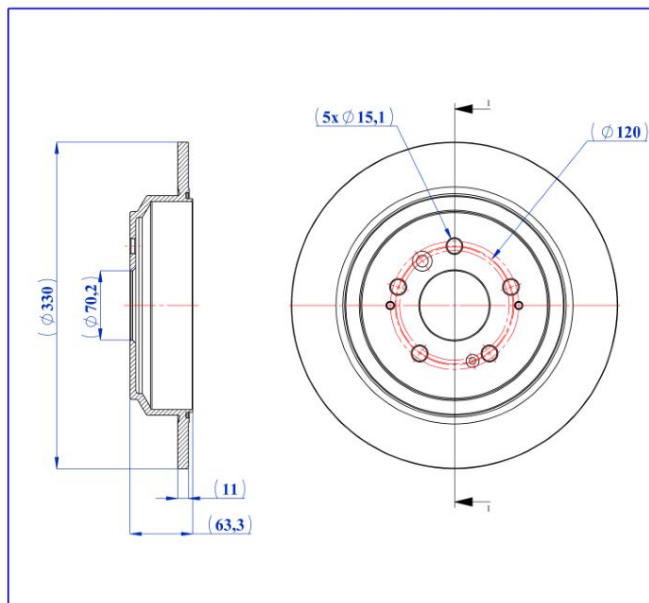
MODEL	START Y.	END Y.
SIERRA 3500 HD Crew Cab Pickup	2013/09	
SIERRA 3500 HD Extended Cab Pickup	2013/09	
SIERRA 3500 HD Standard Cab Pickup	2013/09	



### BRAKE DISC

- Rear Axle
- solid

- Safety
- Performance
- OEM Standarts
- AYD Quality



AYD NO  
**10-51520**

MATERIAL  
**TYPE-1**

WEIGHT  
**6.54 KG**

BALANCING  
**100 %**



OE:  
42510TG7A00

**10-51520**

#### Technical Specifications:

Diameter (mm)	Height (mm)	Brake Disc Thickness (mm)	Min. Thickness (mm)	Centering Diameter (mm)	Bolt Hole Circle (mm)	Num. of Holes
330	63.3	11	9	70.2	120	5+4

### HONDA

MODEL	START Y.	END Y.
PASSPORT Closed Off-Road Vehicle (YF_)	2019/03	
PILOT	2015/07	
RIDGELINE	2016/07	



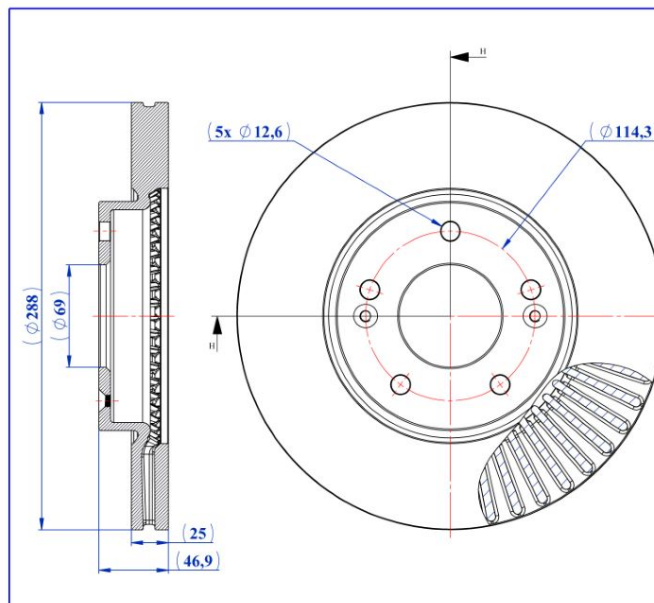
### BRAKE DISC

- Front Axle
- Vented

- Safety
- Performance
- OEM Standarts
- AYD Quality

OE:  
51712G4000

**10-51509**



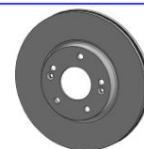
**AYD**  
AUTOMOTIVE INDUSTRY

AYD NO  
**10-51509**

MATERIAL  
**TYPE-1**

WEIGHT  
**7,46 KG**

BALANCING  
**100 %**



#### Technical Specifications:

Diameter (mm)	Height (mm)	Brake Disc Thickness (mm)	Min. Thickness (mm)	Centering Diameter (mm)	Bolt Hole Circle (mm)	Num. of Holes
288	46.9	25	22.6	69	114.3	5+2

### HYUNDAI

MODEL	START Y.	END Y.
i30 (PDE. PD. PDEN)	2016/11	
i30 Estate (PDE)	2017/03	
i30 FASTBACK (PDE. PDEN)	2017/06	
i30 Hatchback Van (PDE)	2016/11	
i30 Kombi Van (PDE)	2017/03	



### BRAKE DISC

- Front Axle
- Vented

- Safety
- Performance
- OEM Standarts
- AYD Quality



OE:  
8941723761 / 8943619271 /  
8970455380

**AYD**<sup>®</sup>  
AUTOMOTIVE INDUSTRY

AYD NO <b>10-51514</b>
MATERIAL <b>TYPE-1</b>
WEIGHT <b>5,45 KG</b>
BALANCING <b>100 %</b>

**10-51514**

#### Technical Specifications:

Diameter (mm)	Height (mm)	Brake Disc Thickness (mm)	Min. Thickness (mm)	Centering Diameter (mm)	Bolt Hole Circle (mm)	Num. of Holes
257	36	22	20.6	88	109	6

### ISUZU

MODEL	START Y.	END Y.
CAMPO (KB)	1977/04	1991/12
D-MAX I (TFR. TFS)	2002/05	2012/12
ELF Platform/Chassis (NHR5_)	1985/10	2003/09
ELF Van (NHR5_)	1985/10	2003/09
GEMINI	1990/01	1993/12
GEMINI (JT)	1984/10	1990/12
GEMINI Saloon	1990/01	1993/12
GEMINI Saloon (JT)	1984/09	1990/06
KB	1988/05	2004/08
KB	1980/01	1990/12
PICKUP (TF)	1996/07	





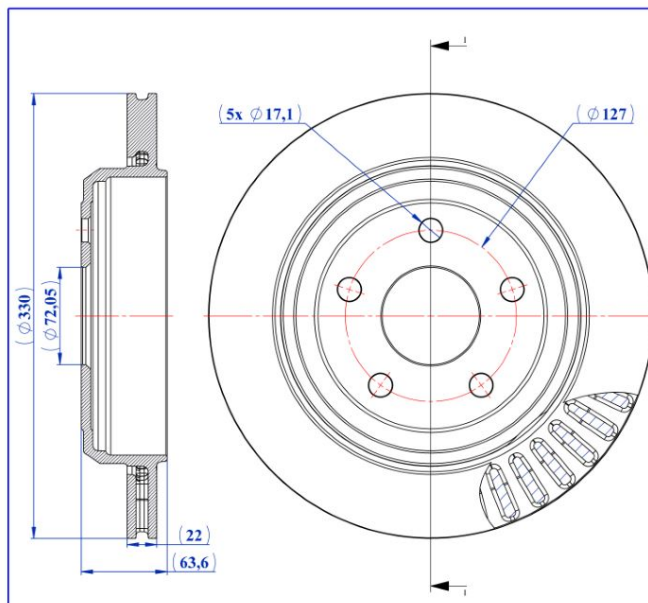
### BRAKE DISC

- Rear Axle
- Vented

- Safety
- Performance
- OEM Standarts
- AYD Quality



OE:  
68035022AB / 68035022AC /  
68035022AE



AYD NO  
**10-51518**

MATERIAL  
**TYPE-1**

WEIGHT  
**8,4 KG**

BALANCING  
**100 %**



**10-51518**

#### Technical Specifications:

Diameter (mm)	Height (mm)	Brake Disc Thickness (mm)	Min. Thickness (mm)	Centering Diameter (mm)	Bolt Hole Circle (mm)	Num. of Holes
330	63.6	22	20.5	72.05	127	5

### JEEP

MODEL	START Y.	END Y.
GRAND CHEROKEE IV (WK. WK2)	2010/06	
GRAND CHEROKEE VAN (WK2)	2010/06	



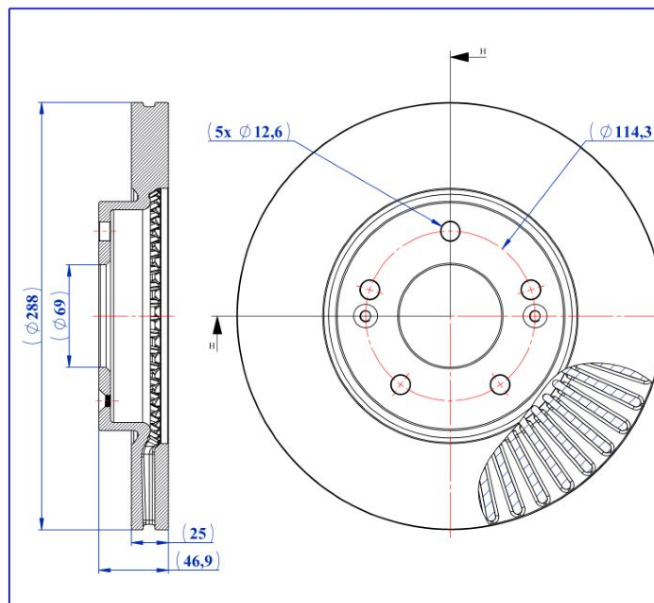
### BRAKE DISC

- Front Axle
- Vented

- Safety
- Performance
- OEM Standarts
- AYD Quality

OE:  
51712G4000

**10-51509**



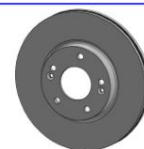
**AYD**  
AUTOMOTIVE INDUSTRY

AYD NO  
**10-51509**

MATERIAL  
**TYPE-1**

WEIGHT  
**7,46 KG**

BALANCING  
**100 %**



#### Technical Specifications:

Diameter (mm)	Height (mm)	Brake Disc Thickness (mm)	Min. Thickness (mm)	Centering Diameter (mm)	Bolt Hole Circle (mm)	Num. of Holes
288	46.9	25	22.6	69	114.3	5+2

### KIA

MODEL	START Y.	END Y.
CEED (CD)	2018/03	
CEED Combi Van (CD)	2018/03	
CEED Hatchback Van (CD)	2018/03	
CEED Sportswagon (CD)	2018/03	
PROCEED (CD)	2018/10	
PROCEED Combi Van (CD)	2018/10	
XCEED (CD)	2019/06	



### BRAKE DISC

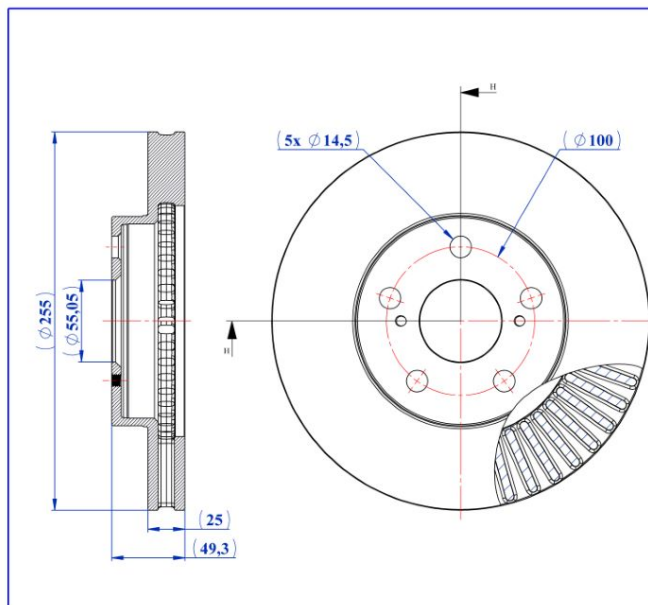
- Front Axle
- Vented

- Safety
- Performance
- OEM Standarts
- AYD Quality



OE:  
4351247040

**10-51519**



**AYD**<sup>®</sup>  
AUTOMOTIVE INDUSTRY

AYD NO  
**10-51519**

MATERIAL  
**TYPE-1**

WEIGHT  
**5,37 KG**

BALANCING  
**100 %**



#### Technical Specifications:

Diameter (mm)	Height (mm)	Brake Disc Thickness (mm)	Min. Thickness (mm)	Centering Diameter (mm)	Bolt Hole Circle (mm)	Num. of Holes
255	49.3	25	22	55.05	100	5+2

### LEXUS

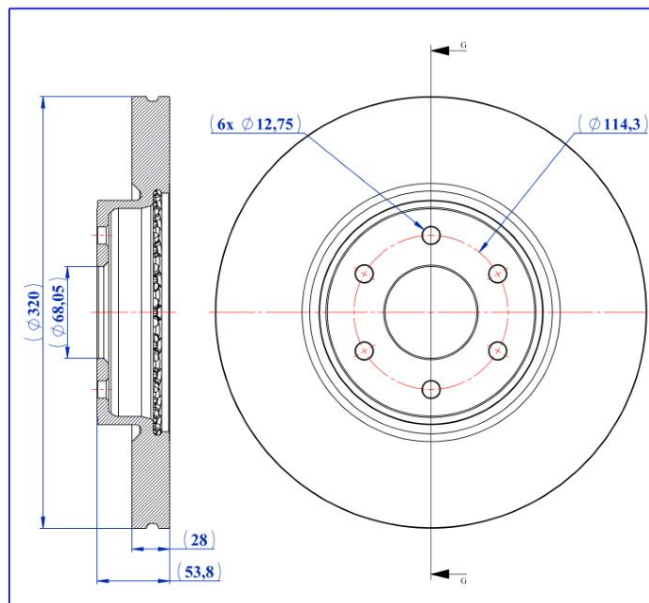
MODEL	START Y.	END Y.
CT (ZWA10_)	2010/12	



### BRAKE DISC

- Front Axle
- Vented

- Safety
- Performance
- OEM Standarts
- AYD Quality

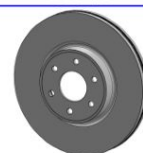


AYD NO  
**10-51507**

MATERIAL  
**TYPE-1**

WEIGHT  
**11,18 KG**

BALANCING  
**100 %**



OE:  
4704210200

**10-51507**

#### Technical Specifications:

Diameter (mm)	Height (mm)	Brake Disc Thickness (mm)	Min. Thickness (mm)	Centering Diameter (mm)	Bolt Hole Circle (mm)	Num. of Holes
320	53.8	28	26	68.05	114.3	6

### MERCEDES-BENZ

MODEL	START Y.	END Y.
X-CLASS (470)	2017/09	2020/05
X-CLASS Platform/Chassis (470)	2017/09	



### BRAKE DISC

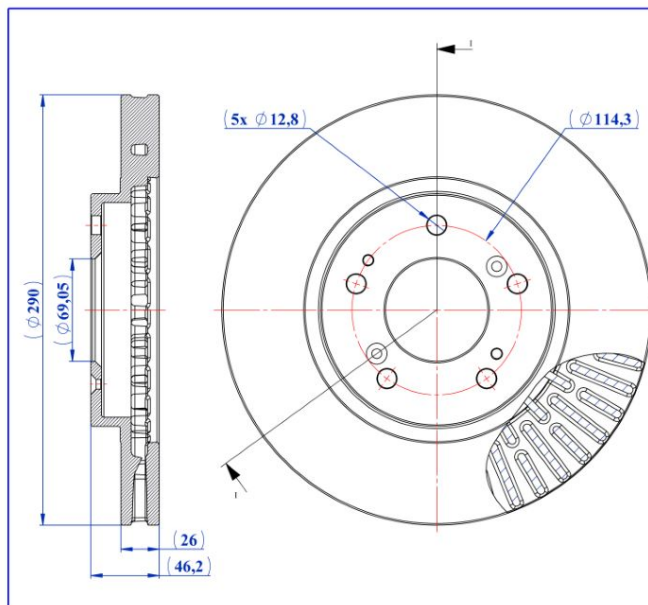
- Front Axle
- Vented

- Safety
- Performance
- OEM Standarts
- AYD Quality



OE:  
4615A050 / 4615A066 / MR955136

**10-51495**

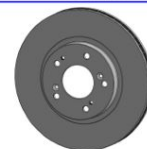


AYD NO  
**10-51495**

MATERIAL  
**TYPE-1**

WEIGHT  
**6,99 KG**

BALANCING  
**100 %**



#### Technical Specifications:

Diameter (mm)	Height (mm)	Brake Disc Thickness (mm)	Min. Thickness (mm)	Centering Diameter (mm)	Bolt Hole Circle (mm)	Num. of Holes
290	46.2	26	24.4	69.05	114.3	5+4

### MITSUBISHI

MODEL	START Y.	END Y.
ENDEAVOR (D8_W, D7_W)	2002/05	2011/08





### BRAKE DISC

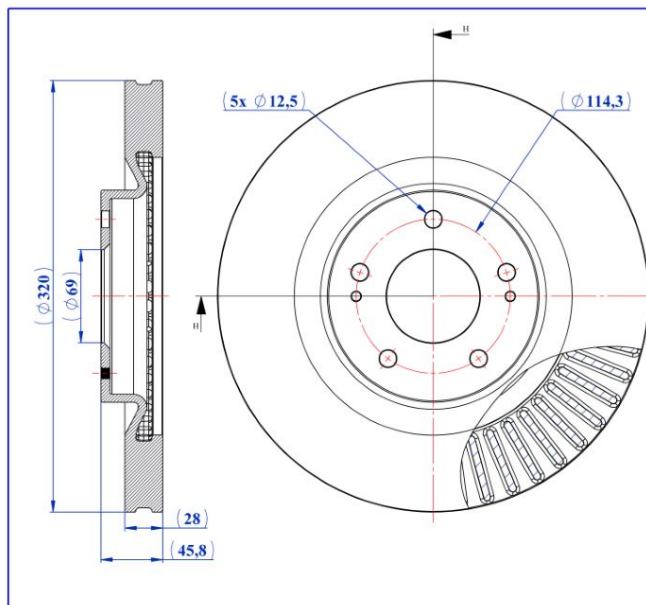
- Front Axle
- Vented

- Safety
- Performance
- OEM Standarts
- AYD Quality



OE:  
4615A230

**10-51508**



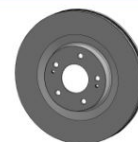
**AYD**<sup>®</sup>  
AUTOMOTIVE INDUSTRY

AYD NO  
**10-51508**

MATERIAL  
**TYPE-1**

WEIGHT  
**8,54 KG**

BALANCING  
**100 %**



#### Technical Specifications:

Diameter (mm)	Height (mm)	Brake Disc Thickness (mm)	Min. Thickness (mm)	Centering Diameter (mm)	Bolt Hole Circle (mm)	Num. of Holes
320	45.8	28	26.4	69	114.3	5+2

### MITSUBISHI

MODEL	START Y.	END Y.
ECLIPSE CROSS (GK_ GL_)	2017/10	
OUTLANDER III (GG_W. GF_W. ZJ. ZL. ZK)	2010/11	
OUTLANDER III Van (GF_W. GG_W)	2010/11	



### BRAKE DISC

- Rear Axle
- solid

- Safety
- Performance
- OEM Standarts
- AYD Quality



OE:  
4615A051 / MR569681 / 4615A112

**10-51521**

AYD NO <b>10-51521</b>
MATERIAL <b>TYPE-1</b>
WEIGHT <b>5.67 KG</b>
BALANCING <b>100 %</b>

#### Technical Specifications:

Diameter (mm)	Height (mm)	Brake Disc Thickness (mm)	Min. Thickness (mm)	Centering Diameter (mm)	Bolt Hole Circle (mm)	Num. of Holes
302	59	10	8.4	69	114.3	5+3

### MITSUBISHI

MODEL	START Y.	END Y.
ENDEAVOR (D8_W. D7_W)	2002/05	2011/08
GRANDIS (N9_. N8_)	1997/11	2003/05
GRANDIS (NA_W)	2003/03	2011/12



### BRAKE DISC

- Front Axle
- Vented

- Safety
- Performance
- OEM Standarts
- AYD Quality



OE:  
40206MB600

**10-51502**

<b>AYD</b> AUTOMOTIVE INDUSTRY	
AYD NO <b>10-51502</b>	
MATERIAL <b>TYPE-1</b>	
WEIGHT <b>7,86 KG</b>	
BALANCING <b>100 %</b>	

#### Technical Specifications:

Diameter (mm)	Height (mm)	Brake Disc Thickness (mm)	Min. Thickness (mm)	Centering Diameter (mm)	Bolt Hole Circle (mm)	Num. of Holes
276	45.1	28	25	94.1	118	5

### NISSAN

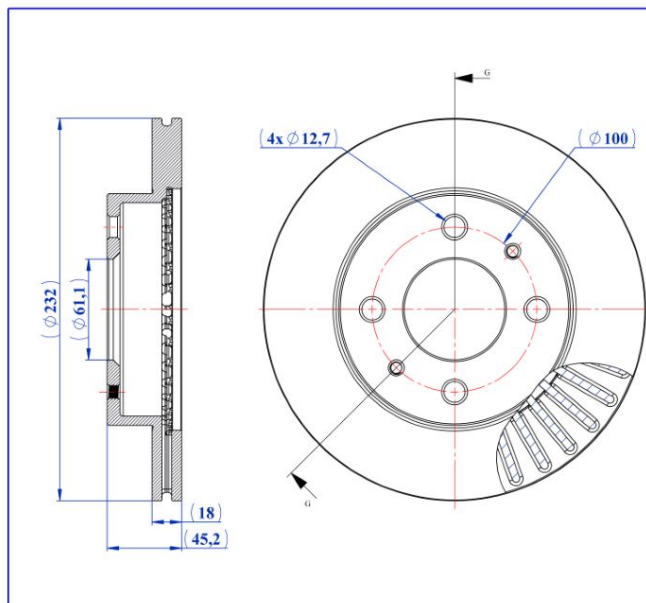
MODEL	START Y.	END Y.
CABSTAR (F24M. F24W)	2006/09	2013/12
NT400 CABSTAR (F24M)	2009/08	



### BRAKE DISC

- Front Axle
- Vented

- Safety
- Performance
- OEM Standards
- AYD Quality

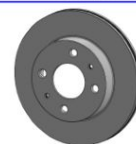


AYD NO  
**10-51504**

MATERIAL  
**TYPE-1**

WEIGHT  
**3,67 KG**

BALANCING  
**100 %**



OE:  
402060M601 / 402060M602 /  
40206F4300

**10-51504**

#### Technical Specifications:

Diameter (mm)	Height (mm)	Brake Disc Thickness (mm)	Min. Thickness (mm)	Centering Diameter (mm)	Bolt Hole Circle (mm)	Num. of Holes
232	45.2	18	16	61.1	100	4+2

### NISSAN

MODEL	START Y.	END Y.
ALMERA I (N15)	1995/07	2000/09
ALMERA I Hatchback (N15)	1995/07	2001/01
SUNNY IV Saloon (N16)	1995/07	2003/12



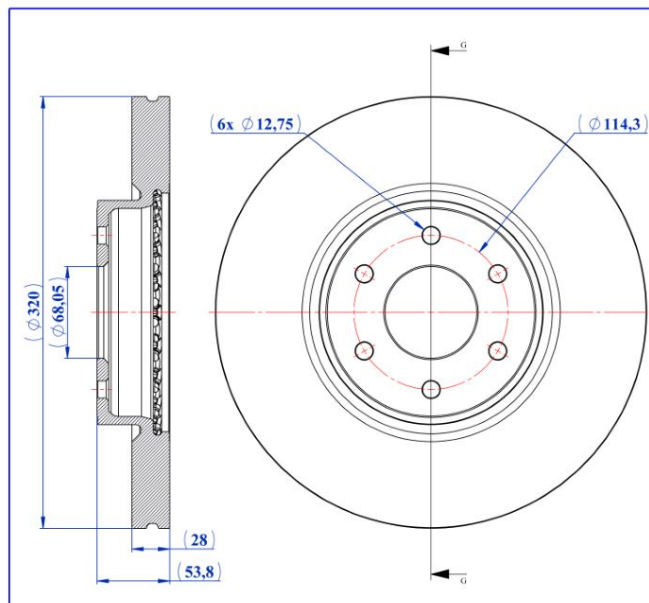
### BRAKE DISC

- Front Axle
- Vented

- Safety
- Performance
- OEM Standards
- AYD Quality

OE:  
402065XA0A

**10-51507**

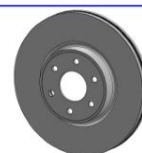


AYD NO  
**10-51507**

MATERIAL  
**TYPE-1**

WEIGHT  
**11,18 KG**

BALANCING  
**100 %**



#### Technical Specifications:

Diameter (mm)	Height (mm)	Brake Disc Thickness (mm)	Min. Thickness (mm)	Centering Diameter (mm)	Bolt Hole Circle (mm)	Num. of Holes
320	53.8	28	26	68.05	114.3	6

### NISSAN

MODEL	START Y.	END Y.
NAVARA NP300 (D40)	2004/10	
NAVARA NP300 Pickup (D23. D23T)	2014/07	
NAVARA NP300 Platform/Chassis (D23)	2015/01	





### BRAKE DISC

- Front Axle
- Vented

- Safety
- Performance
- OEM Standarts
- AYD Quality



OE:  
13584677

**10-51506**

Technical drawing showing a cross-section and a top view of the brake disc. Dimensions include: diameter  $\varnothing 256$ , centering diameter  $\varnothing 60,05$ , height  $40,8$ , and bolt hole diameter  $4 \times \varnothing 12,6$ . A smaller diameter of  $\varnothing 100$  is also indicated. The drawing includes the AYD logo and the text 'AYD AUTOMOTIVE INDUSTRY'.

AYD NO <b>10-51506</b>
MATERIAL <b>TYPE-1</b>
WEIGHT <b>4,58 KG</b>
BALANCING <b>100 %</b>

#### Technical Specifications:

Diameter (mm)	Height (mm)	Brake Disc Thickness (mm)	Min. Thickness (mm)	Centering Diameter (mm)	Bolt Hole Circle (mm)	Num. of Holes
256	40.8	20	18	60.05	100	4+1

### OPEL

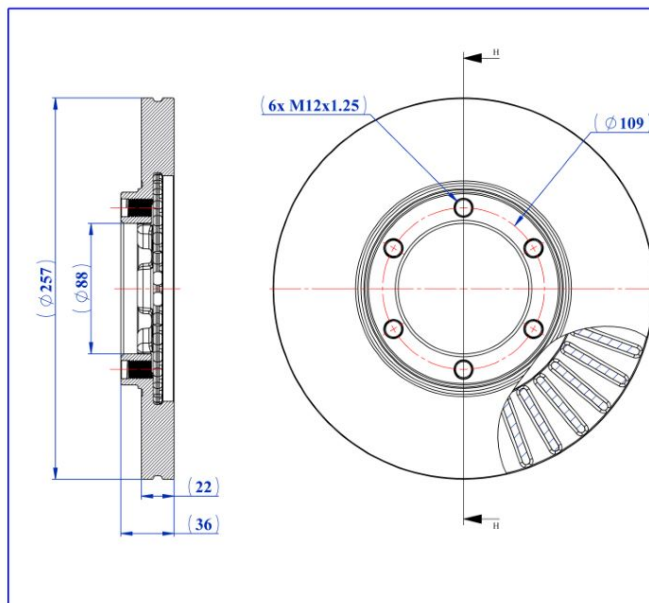
MODEL	START Y.	END Y.
KARL (C16)	2015/01	2019/03



### BRAKE DISC

- Front Axle
- Vented

- Safety
- Performance
- OEM Standarts
- AYD Quality

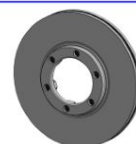


AYD NO  
**10-51514**

MATERIAL  
**TYPE-1**

WEIGHT  
**5,45 KG**

BALANCING  
**100 %**



OE:  
569801 / 94172376

**10-51514**

#### Technical Specifications:

Diameter (mm)	Height (mm)	Brake Disc Thickness (mm)	Min. Thickness (mm)	Centering Diameter (mm)	Bolt Hole Circle (mm)	Num. of Holes
257	36	22	20.6	88	109	6

### OPEL

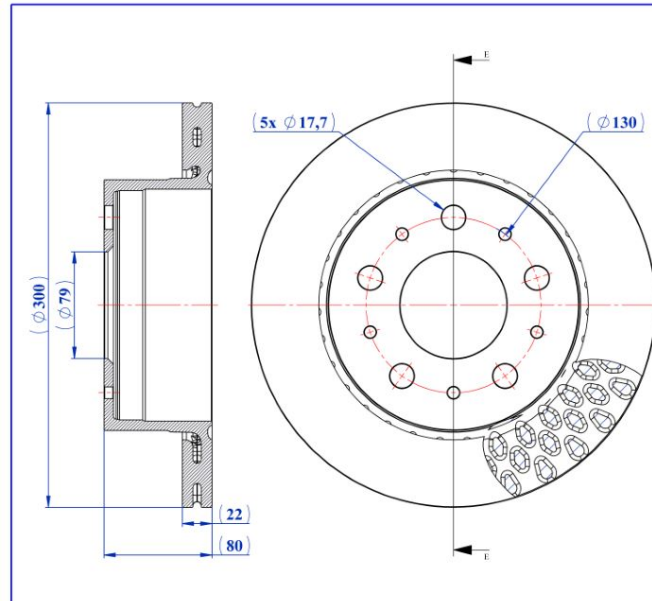
MODEL	START Y.	END Y.
CAMPO (TF0. TF1)	1987/08	2002/06
FRONTERA A (U92)	1992/03	1998/10
FRONTERA A Sport (U92)	1992/03	1998/10
SINTRA (APV)	1996/11	1999/04



### BRAKE DISC

- Rear Axle
- Vented

- Safety
- Performance
- OEM Standarts
- AYD Quality



AYD NO  
**10-51498**

MATERIAL  
**TYPE-1**

WEIGHT  
**8,52 KG**

BALANCING  
**100 %**



OE:  
1612435780 / 1612435880

**10-51498**

#### Technical Specifications:

Diameter (mm)	Height (mm)	Brake Disc Thickness (mm)	Min. Thickness (mm)	Centering Diameter (mm)	Bolt Hole Circle (mm)	Num. of Holes
300	80	22	19.9	79	130	5+5

### PEUGEOT

MODEL	START Y.	END Y.
BOXER Bus	2005/09	
BOXER Platform/Chassis	2006/04	
BOXER Van	2006/04	



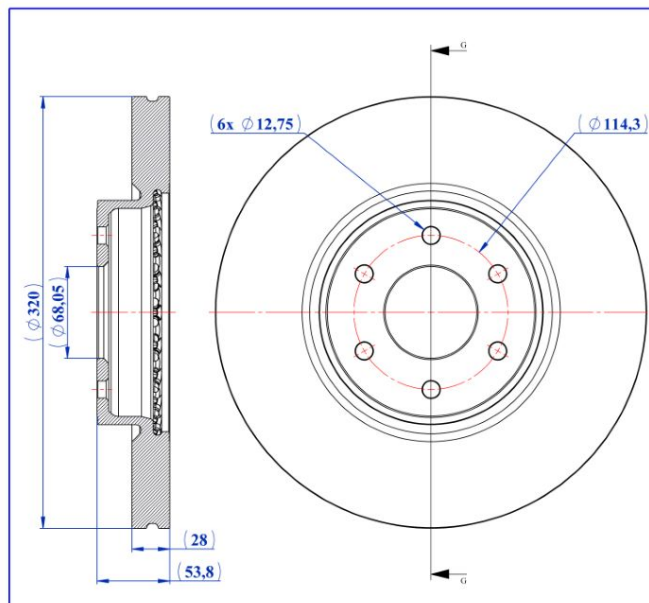
### BRAKE DISC

- Front Axle
- Vented

- Safety
- Performance
- OEM Standarts
- AYD Quality

OE:  
402065XA0A

**10-51507**

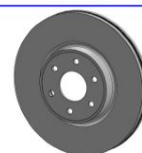


AYD NO  
**10-51507**

MATERIAL  
**TYPE-1**

WEIGHT  
**11,18 KG**

BALANCING  
**100 %**



#### Technical Specifications:

Diameter (mm)	Height (mm)	Brake Disc Thickness (mm)	Min. Thickness (mm)	Centering Diameter (mm)	Bolt Hole Circle (mm)	Num. of Holes
320	53.8	28	26	68.05	114.3	6

### RENAULT

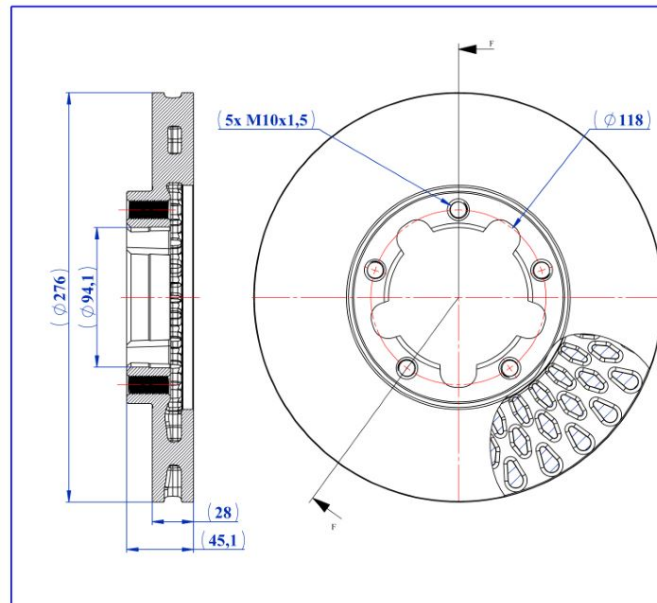
MODEL	START Y.	END Y.
ALASKAN	2016/10	



### BRAKE DISC

- Front Axle
- Vented

- Safety
- Performance
- OEM Standarts
- AYD Quality



AYD NO  
**10-51502**

MATERIAL  
**TYPE-1**

WEIGHT  
**7,86 KG**

BALANCING  
**100 %**



OE:  
5001871213

**10-51502**

#### Technical Specifications:

Diameter (mm)	Height (mm)	Brake Disc Thickness (mm)	Min. Thickness (mm)	Centering Diameter (mm)	Bolt Hole Circle (mm)	Num. of Holes
276	45.1	28	25	94.1	118	5

### RENAULT

MODEL	START Y.	END Y.
MAXITY	2007/03	

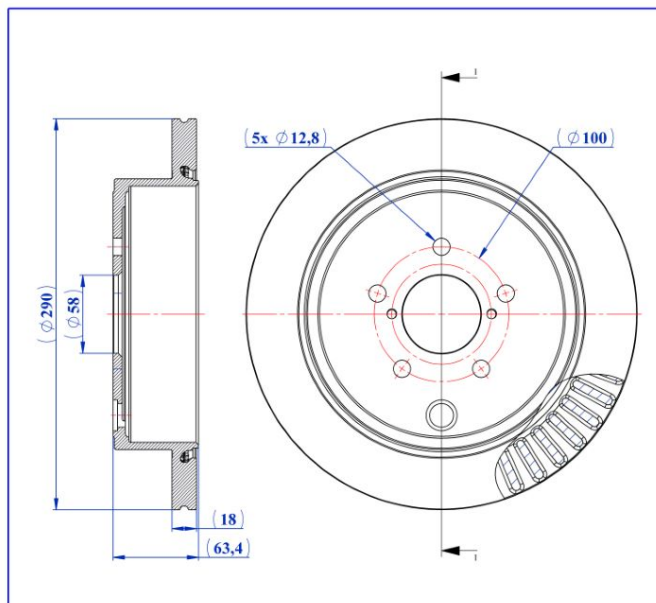




### BRAKE DISC

- Rear Axle
- Vented

- Safety
- Performance
- OEM Standarts
- AYD Quality



AYD NO  
**10-51499**

MATERIAL  
**TYPE-1**

WEIGHT  
**6,15 KG**

BALANCING  
**100 %**



OE:  
SU00300638

**10-51499**

#### Technical Specifications:

Diameter (mm)	Height (mm)	Brake Disc Thickness (mm)	Min. Thickness (mm)	Centering Diameter (mm)	Bolt Hole Circle (mm)	Num. of Holes
290	63.4	18	16	58	100	5+3

### SCION

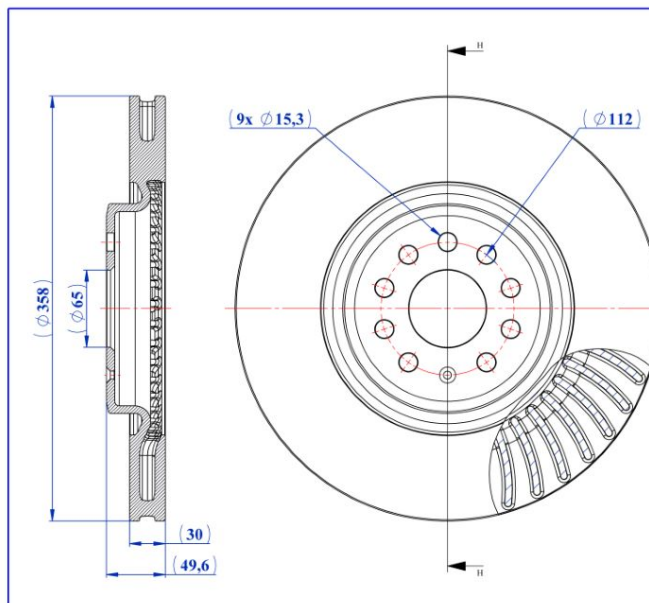
MODEL	START Y.	END Y.
FR-S Coupe	2011/09	



### BRAKE DISC

- Front Axle
- Vented

- Safety
- Performance
- OEM Standarts
- AYD Quality

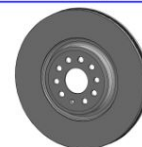


AYD NO  
**10-50916**

MATERIAL  
**TYPE-1**

WEIGHT  
**11,86 KG**

BALANCING  
**100 %**



OE:  
1EA615301B

**10-50916**

#### Technical Specifications:

Diameter (mm)	Height (mm)	Brake Disc Thickness (mm)	Min. Thickness (mm)	Centering Diameter (mm)	Bolt Hole Circle (mm)	Num. of Holes
358	49.6	30	28.5	65	112	9+1

### SKODA

MODEL	START Y.	END Y.
ENYAQ iV Coupe (5AC)	2021/07	
ENYAQ iV SUV (5AZ)	2020/10	



### BRAKE DISC

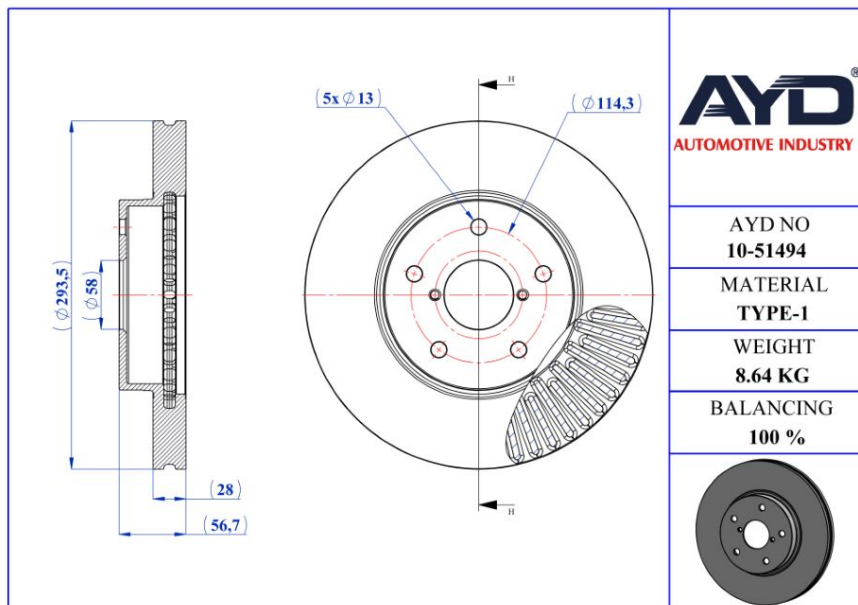
- Front Axle
- Vented

- Safety
- Performance
- OEM Standarts
- AYD Quality



OE:  
26300AL000

**10-51494**



<b>AYD</b> AUTOMOTIVE INDUSTRY
AYD NO <b>10-51494</b>
MATERIAL <b>TYPE-1</b>
WEIGHT <b>8.64 KG</b>
BALANCING <b>100 %</b>

#### Technical Specifications:

Diameter (mm)	Height (mm)	Brake Disc Thickness (mm)	Min. Thickness (mm)	Centering Diameter (mm)	Bolt Hole Circle (mm)	Num. of Holes
293.5	56.7	28	26	58	114.3	5+2

### SUBARU

MODEL	START Y.	END Y.
LEGACY VI (BN)	2015/01	
LEVORG	2015/03	



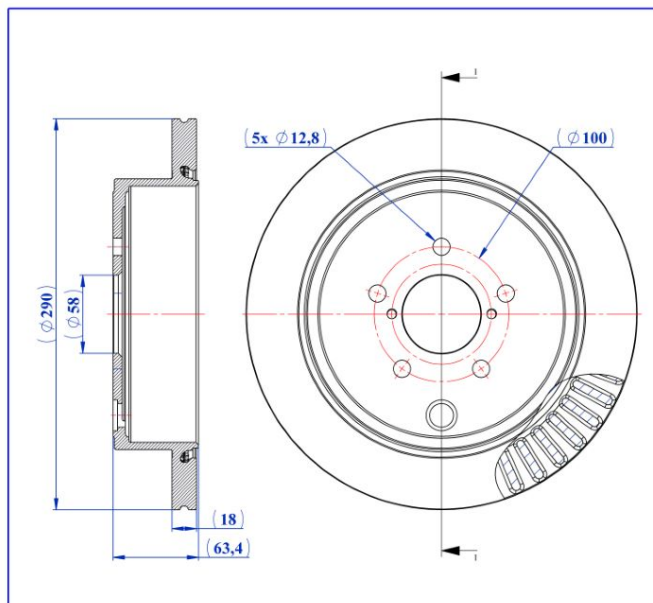
### BRAKE DISC

- Rear Axle
- Vented

- Safety
- Performance
- OEM Standarts
- AYD Quality



OE:  
26700AJ010 / 26700CC000 /  
26700CC000



AYD NO  
**10-51499**

MATERIAL  
**TYPE-1**

WEIGHT  
**6,15 KG**

BALANCING  
**100 %**



**10-51499**

#### Technical Specifications:

Diameter (mm)	Height (mm)	Brake Disc Thickness (mm)	Min. Thickness (mm)	Centering Diameter (mm)	Bolt Hole Circle (mm)	Num. of Holes
290	63.4	18	16	58	100	5+3

### SUBARU

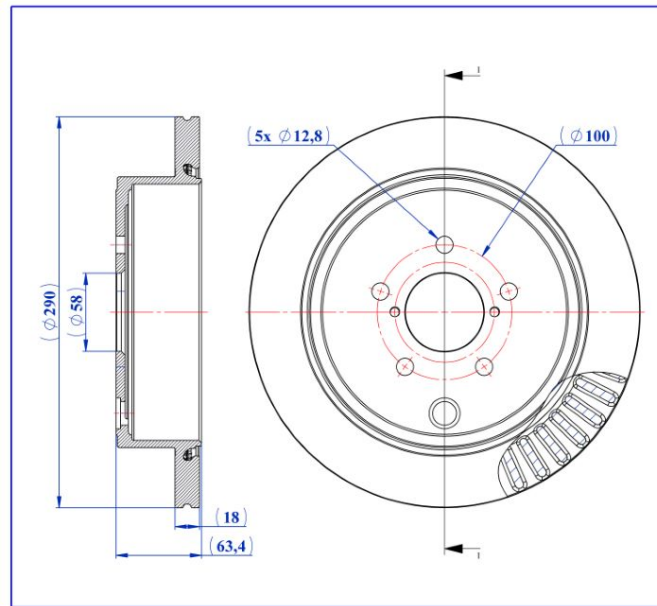
MODEL	START Y.	END Y.
BRZ (ZC6)	2012/06	
BRZ (ZD8)	2021/10	
IMPREZA Hatchback (GR. GH. G3)	2007/03	2014/05
IMPREZA Saloon (GE. GV)	2007/01	
LEGACY V (BM)	2009/05	
LEGACY V Estate (BR)	2008/06	2014/12
OUTBACK (BR)	2009/06	



### BRAKE DISC

- Rear Axle
- Vented

- Safety
- Performance
- OEM Standarts
- AYD Quality



AYD NO  
**10-51499**

MATERIAL  
**TYPE-1**

WEIGHT  
**6,15 KG**

BALANCING  
**100 %**



OE:  
SU00300638 / SU00310629

**10-51499**

#### Technical Specifications:

Diameter (mm)	Height (mm)	Brake Disc Thickness (mm)	Min. Thickness (mm)	Centering Diameter (mm)	Bolt Hole Circle (mm)	Num. of Holes
290	63.4	18	16	58	100	5+3

### TOYOTA

MODEL	START Y.	END Y.
GR 86 Coupe (ZN8)	2021/09	
GT 86 Coupe (ZN6_)	2012/03	



### BRAKE DISC

- Front Axle
- Vented

- Safety
- Performance
- OEM Standarts
- AYD Quality



OE:  
43512K0030

**10-51511**

Technical drawing showing a cross-section and a top view of the brake disc. Dimensions include: (∅ 260) for the outer diameter, (∅ 55) for the centering diameter, 22 for the disc thickness, 46.2 for the total height, and 5x ∅ 14.6 for the mounting holes. The top view also shows a bolt hole circle diameter of ∅ 100.

<b>AYD</b> AUTOMOTIVE INDUSTRY
AYD NO <b>10-51511</b>
MATERIAL <b>TYPE-1</b>
WEIGHT <b>5,17 KG</b>
BALANCING <b>100 %</b>

#### Technical Specifications:

Diameter (mm)	Height (mm)	Brake Disc Thickness (mm)	Min. Thickness (mm)	Centering Diameter (mm)	Bolt Hole Circle (mm)	Num. of Holes
260	46.2	22	19	55	100	5+2

### TOYOTA

MODEL	START Y.	END Y.
YARIS (_P21_._PA1_._PH1_)	2020/02	
YARIS CROSS (MXP_)	2020/09	





### BRAKE DISC

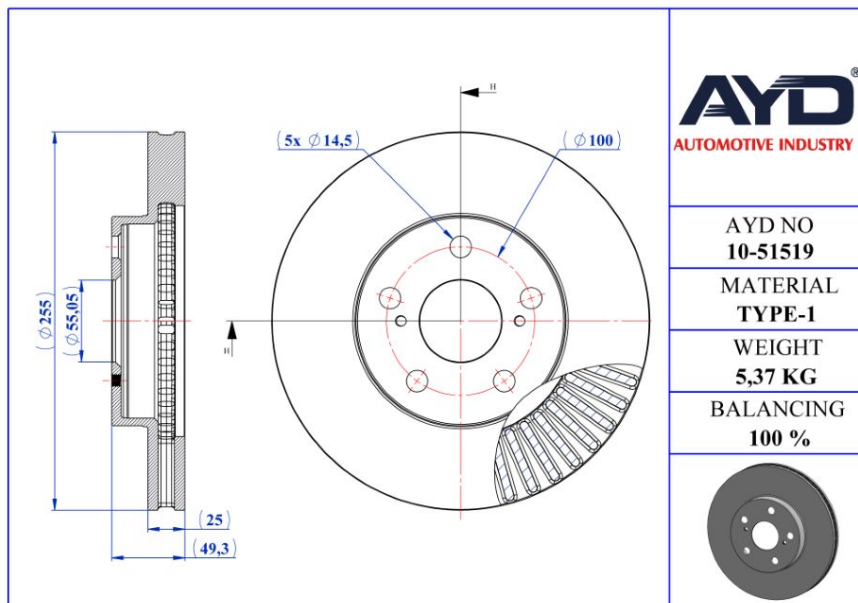
- Front Axle
- Vented

- Safety
- Performance
- OEM Standarts
- AYD Quality



OE:  
4351247040 / 4351247050

**10-51519**



AYD NO  
**10-51519**

MATERIAL  
**TYPE-1**

WEIGHT  
**5,37 KG**

BALANCING  
**100 %**



#### Technical Specifications:

Diameter (mm)	Height (mm)	Brake Disc Thickness (mm)	Min. Thickness (mm)	Centering Diameter (mm)	Bolt Hole Circle (mm)	Num. of Holes
255	49.3	25	22	55.05	100	5+2

### TOYOTA

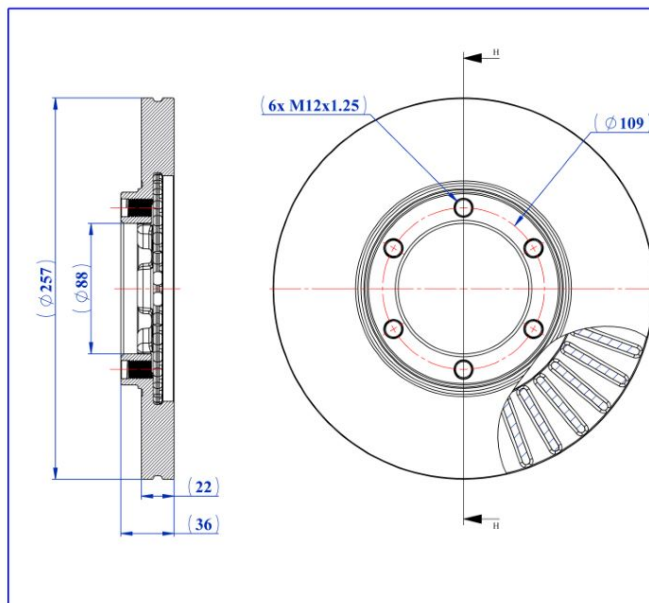
MODEL	START Y.	END Y.
PRIUS (_W3_)	2008/06	2016/06



### BRAKE DISC

- Front Axle
- Vented

- Safety
- Performance
- OEM Standarts
- AYD Quality

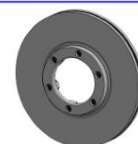


AYD NO  
**10-51514**

MATERIAL  
**TYPE-1**

WEIGHT  
**5,45 KG**

BALANCING  
**100 %**



OE:  
94172376

**10-51514**

#### Technical Specifications:

Diameter (mm)	Height (mm)	Brake Disc Thickness (mm)	Min. Thickness (mm)	Centering Diameter (mm)	Bolt Hole Circle (mm)	Num. of Holes
257	36	22	20.6	88	109	6

### VAUXHALL

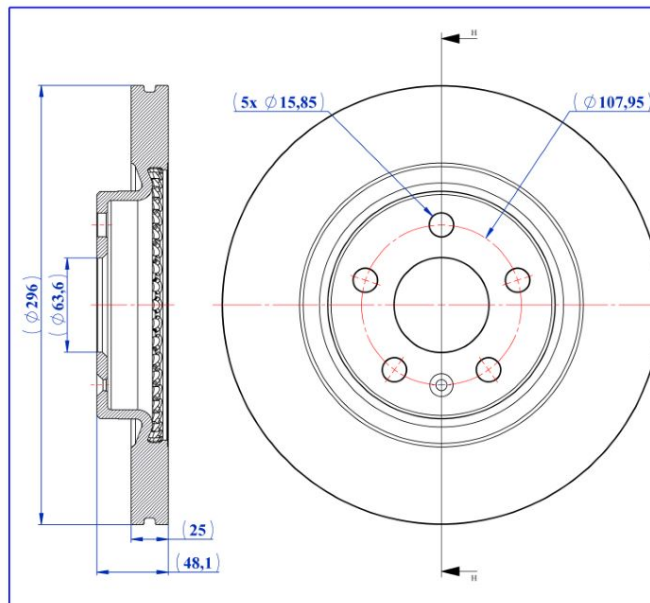
MODEL	START Y.	END Y.
BRAVA Pickup (TF0. TF1)	1988/12	2002/12
FRONTERA Mk I (A) (U92)	1991/09	1998/10
FRONTERA Mk I (A) Sport (U92)	1992/03	1998/10
SINTRA (APV)	1996/09	1999/04



### BRAKE DISC

- Front Axle
- Vented

- Safety
- Performance
- OEM Standarts
- AYD Quality



AYD NO  
**10-51512**

MATERIAL  
**TYPE-1**

WEIGHT  
**7,93 KG**

BALANCING  
**100 %**



OE:  
32300121 / 31471414 / 314714140

**10-51512**

#### Technical Specifications:

Diameter (mm)	Height (mm)	Brake Disc Thickness (mm)	Min. Thickness (mm)	Centering Diameter (mm)	Bolt Hole Circle (mm)	Num. of Holes
296	48.1	25	22	63.6	107.95	5+1

### VOLVO

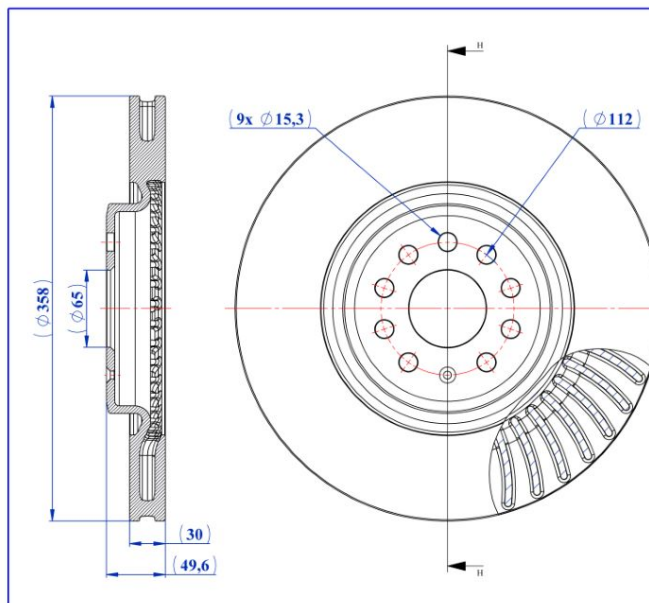
MODEL	START Y.	END Y.
XC40 (536)	2017/10	



### BRAKE DISC

- Front Axle
- Vented

- Safety
- Performance
- OEM Standarts
- AYD Quality

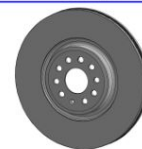


AYD NO  
**10-50916**

MATERIAL  
**TYPE-1**

WEIGHT  
**11,86 KG**

BALANCING  
**100 %**



OE:  
1EA615301B

**10-50916**

#### Technical Specifications:

Diameter (mm)	Height (mm)	Brake Disc Thickness (mm)	Min. Thickness (mm)	Centering Diameter (mm)	Bolt Hole Circle (mm)	Num. of Holes
358	49.6	30	28.5	65	112	9+1

### VW

MODEL	START Y.	END Y.
ID. Buzz Bus	2022/05	
ID. Buzz Van	2022/04	
ID.4 (E21)	2020/05	
ID.5 (E39)	2021/07	
ID.7 (ED2)	2023/06	
ID.7 Tourer (ED5)	2024/02	

